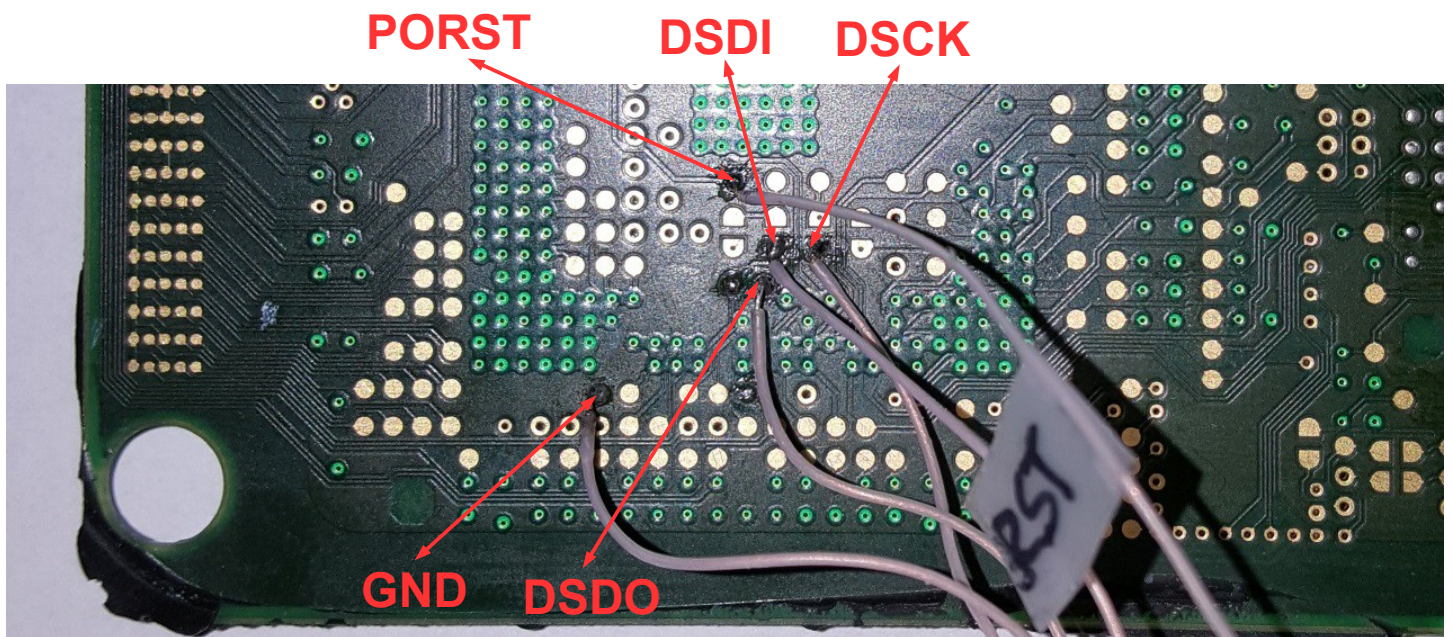


## ACDELCO E38 BDM RECOVERY

To use with BDM100 you will need DSDO,DSDI,DSCK,PORST, GND signals .  
Ecu option 14 in BDM100 software . Also you will need bootpins.

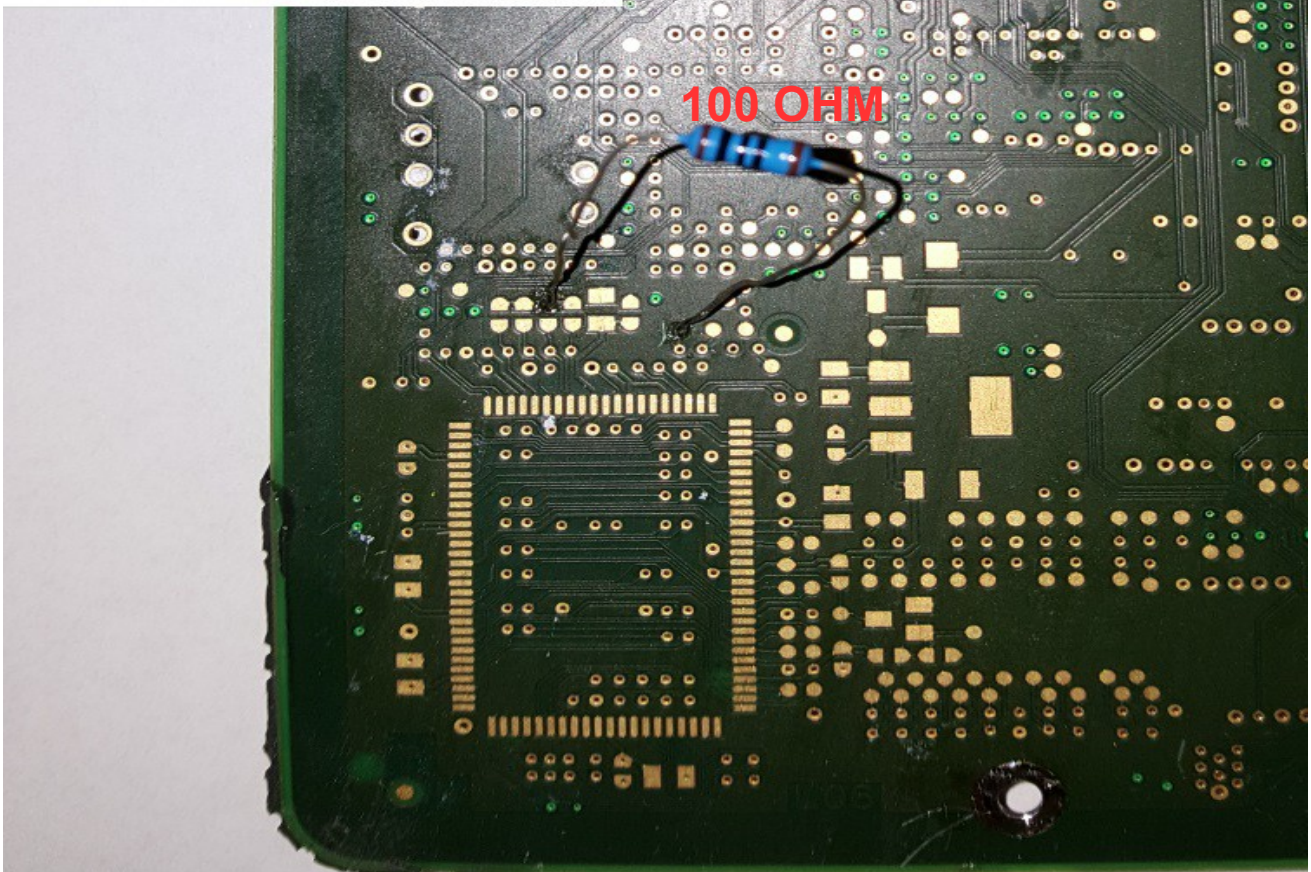
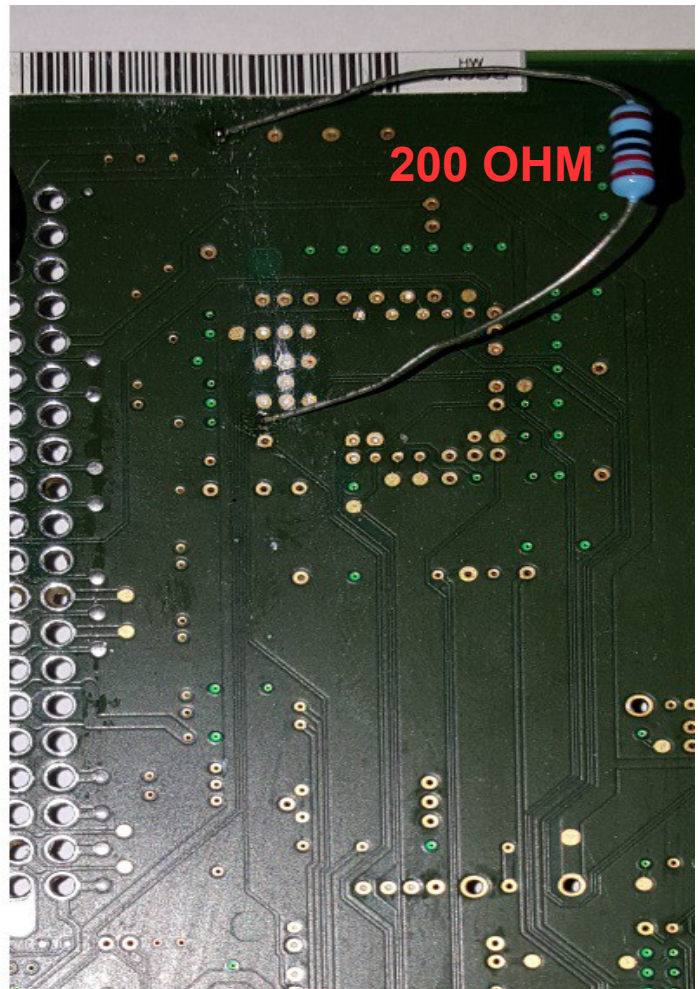


**CHECK PAGE 2 FOR BOOTPINS**

**CHECK PAGE 3-4 FOR PCB ONLY PHOTOS**

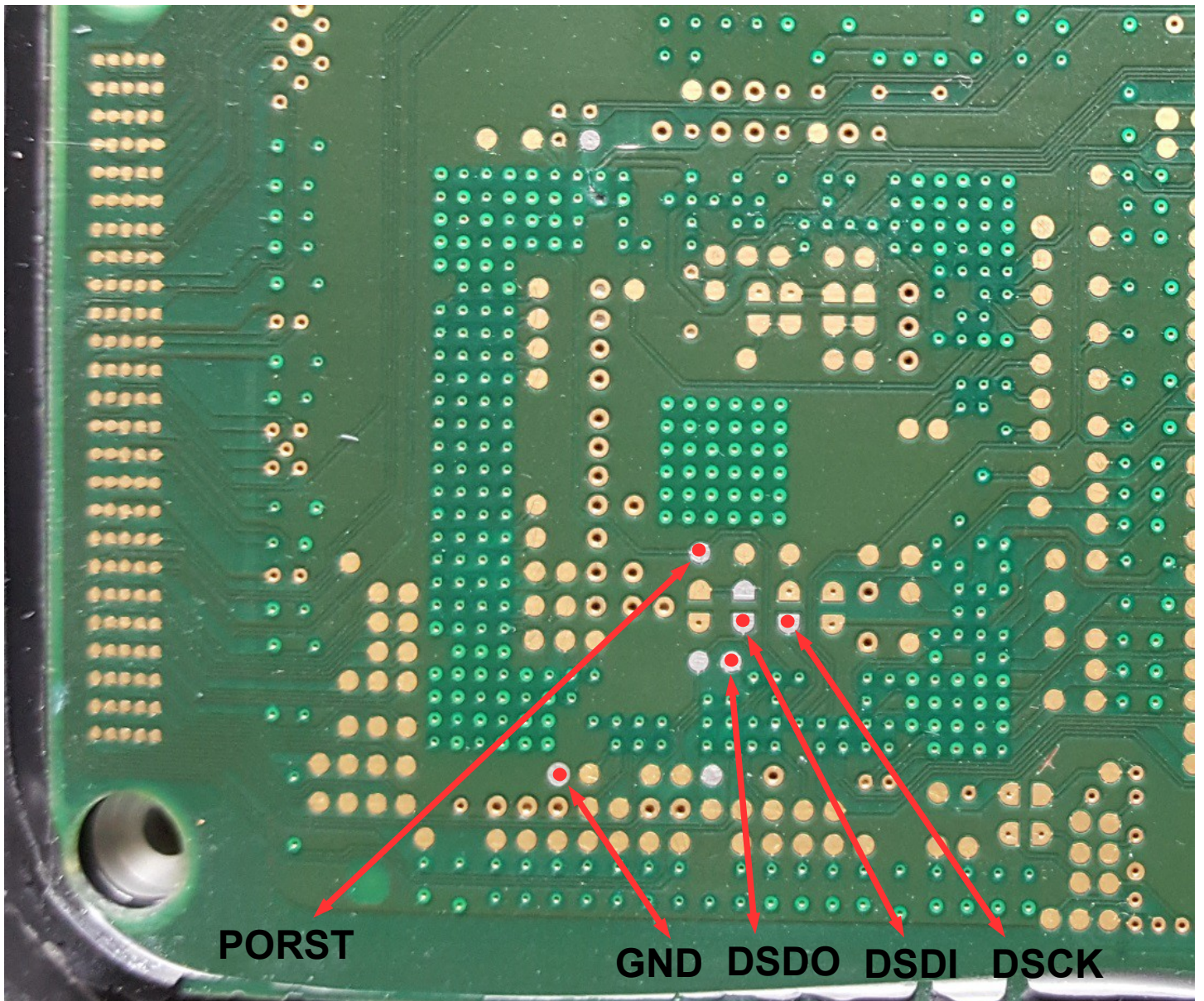


## ACDELCO E38 BDM RECOVERY BOOTPINS





## ACDELCO E38 BDM RECOVERY





## ACDELCO E38 BDM RECOVERY BOOTPINS

