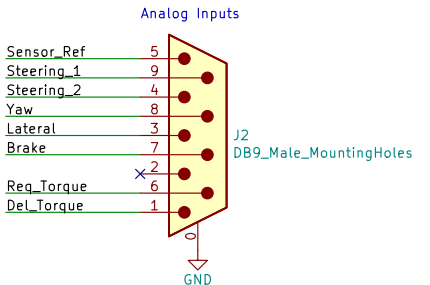
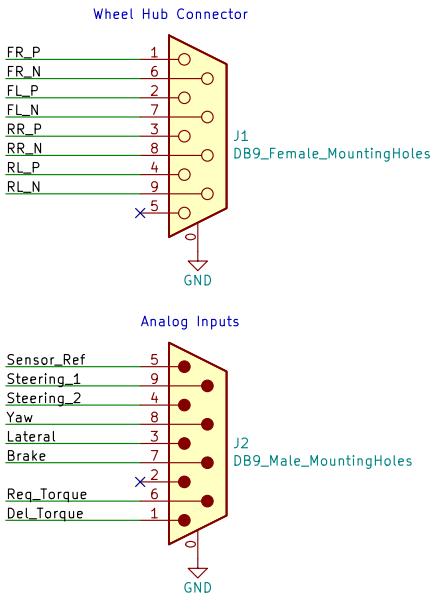
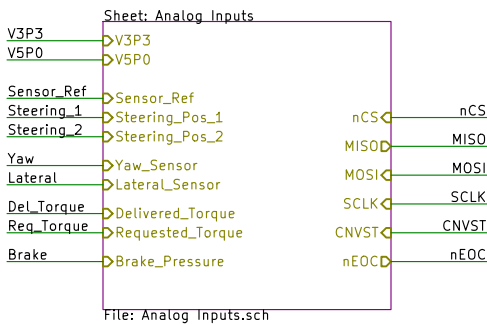
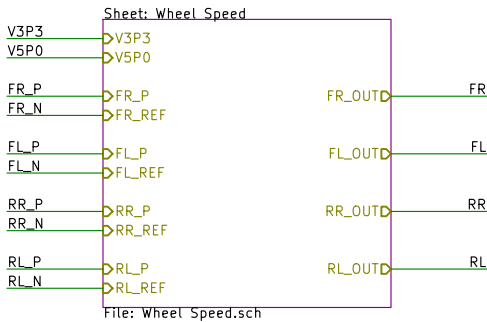
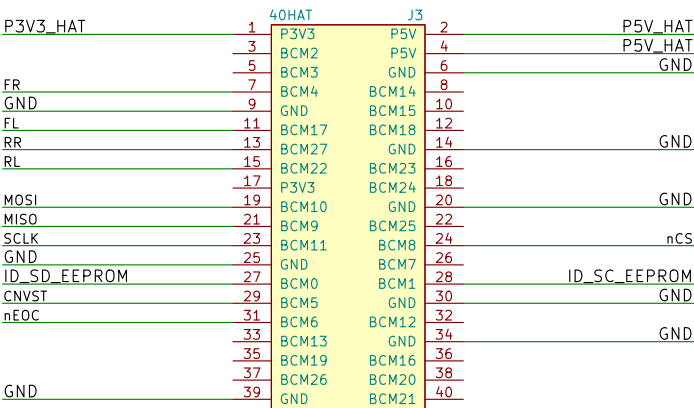
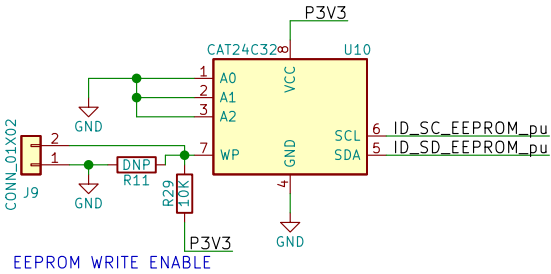


This is based on the official Raspberry Pi spec to be able to call an extension board a HAT.  
<https://github.com/raspberrypi/hats/blob/master/designguide.md>

40-Pin HAT Connector

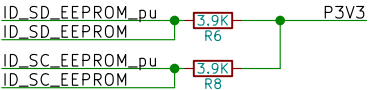


HAT EEPROM



Pullup Resistors

These are just pullup resistors for the I2C bus on the EEPROM.  
The resistor values are per the HAT spec.



Mounting Holes

