

VXDIAG VCX Nano for GM/Opel Diagnostic Programming Installation Instructions

VXDIAG VCX NANO Box is PC-to-vehicle interface compatible with multiple software applications, minimizing your investment in multiple brand-specific diagnostic interfaces.

This VXDIAG VCX NANO support GM Tech2Win and GDS2, you can use the software we provide or you can use your own software but use our vxmanager driver.

For vehicles before 07, please use tech 2 software for diagnosis

GDS software for cars after 2007

Software download link:

GDS2 : https://mega.nz/#F!jN4lSYaA!5Q_p4sZEySxLu6HVPP418A

Video: <https://youtu.be/WrzPriILVaU>

GDS2_2018-01: <https://mega.nz/#F!Q0Aj1BqI!iW1YeXoS9RjKtK9FEKkkAA>

Tech2Win:

<https://mega.nz/#!tIFWUIxT!XBAFZWEFPhQ3A9MtyPYfT1wojVgB1sEmt2T62nrmQc>

M

Installation Tips:

1. GDS software need install on 64bit computer and use vmware machine.

TECH2WIN need install on 32bit computer and physic system. Both computer RAM need at least 4GB.

2. Please turn off the anti-virus program before installing the software.二

Installation content: install GDS software and Tech2Win software

1. The first part is to install the GDS software first: the operation steps are to install VXManager first, then install the driver, and finally install GDS.

And the installation video:

http://www.mediafire.com/file/z41h4nbcvehw7rd/sp241-VXDIAG_GM_GDS2_Install_Video.avi

2. The second part of installing Tech2Win software is the same as installing GDS software. First install VXManager, then install the driver, and finally install Tech2Win software.

And the installation

video:http://www.mediafire.com/file/pc81dqs2zossszn/sp241-VXDIAG_GM_Tech2Win_Install_Video.avi

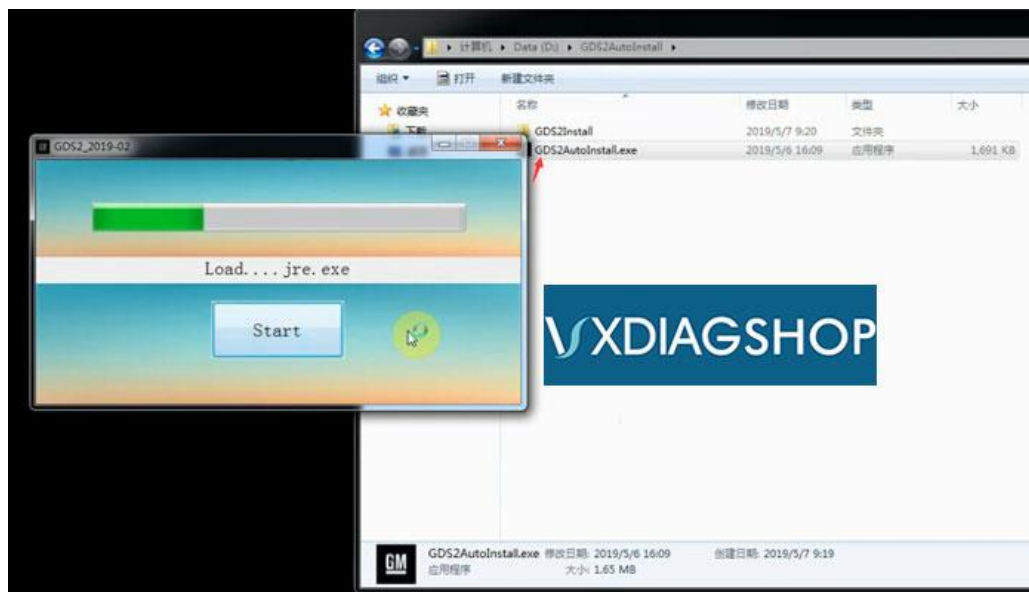
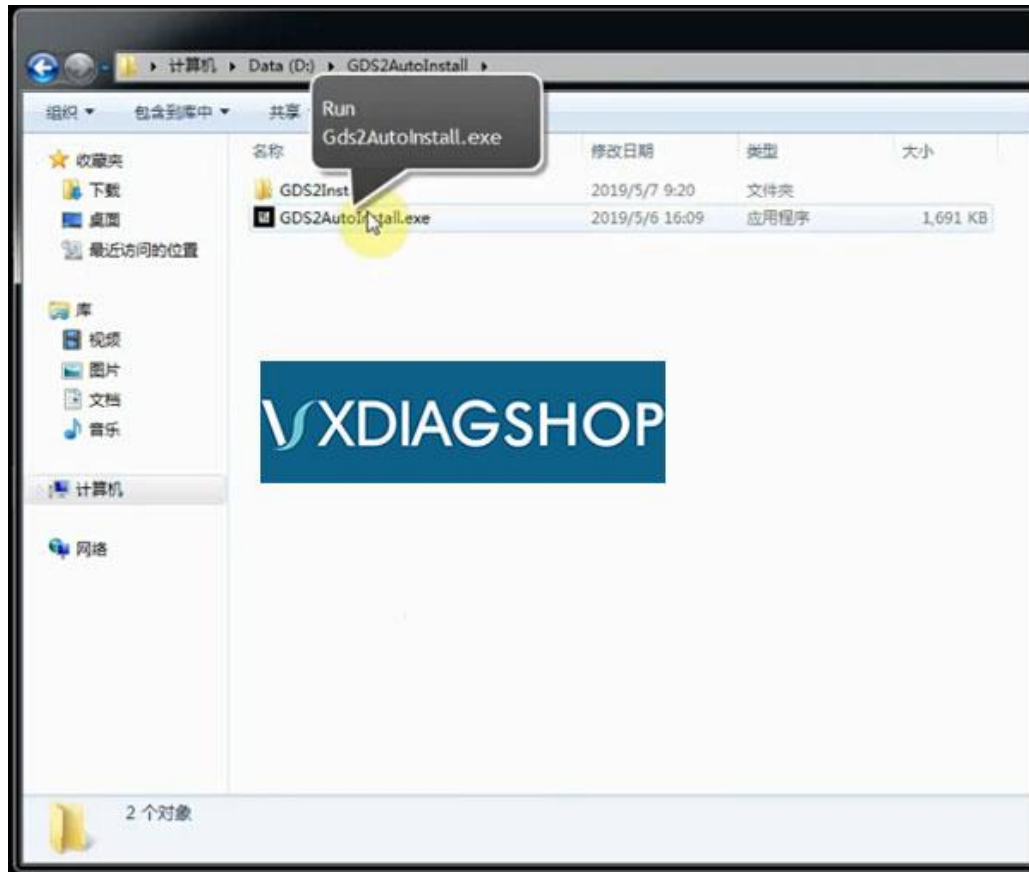
Note:

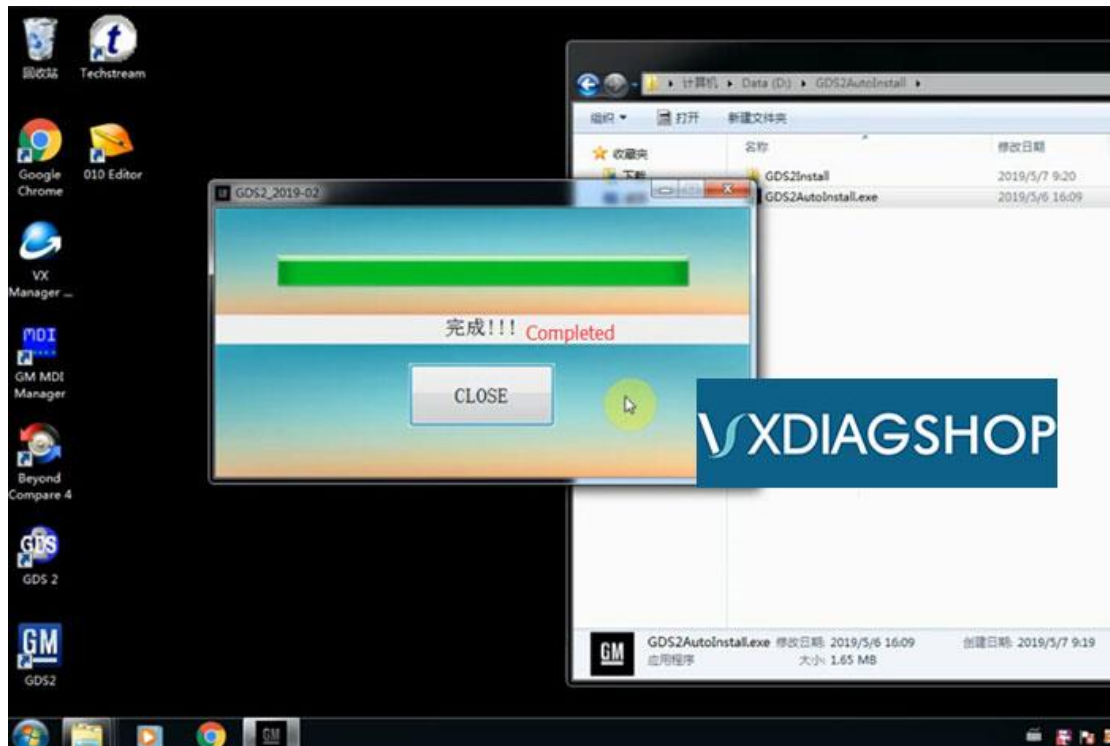
1.If you vehicle is before 2007 please use the tech2win. After 2007 please use GDS.

2. Only GDS2 Software support Opel and SAAB. Please do not use tech2win to test Opel or SAAB, Tech2win DOES NOT Support!

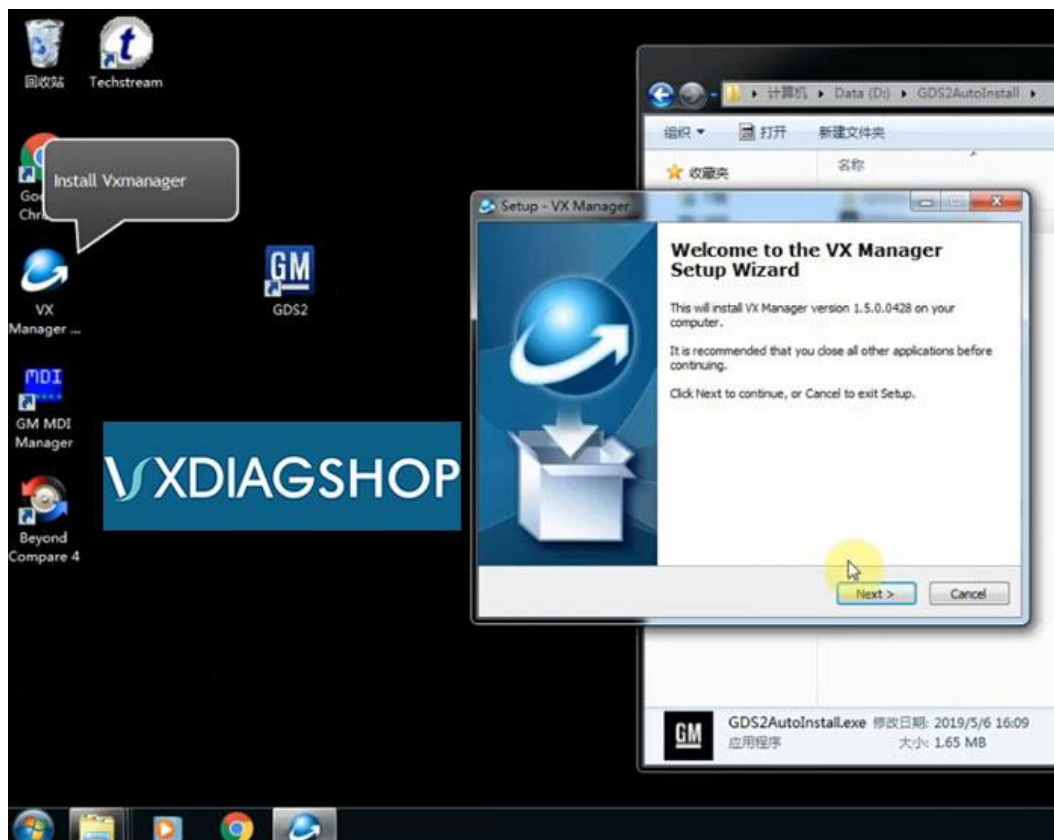
Installation Steps

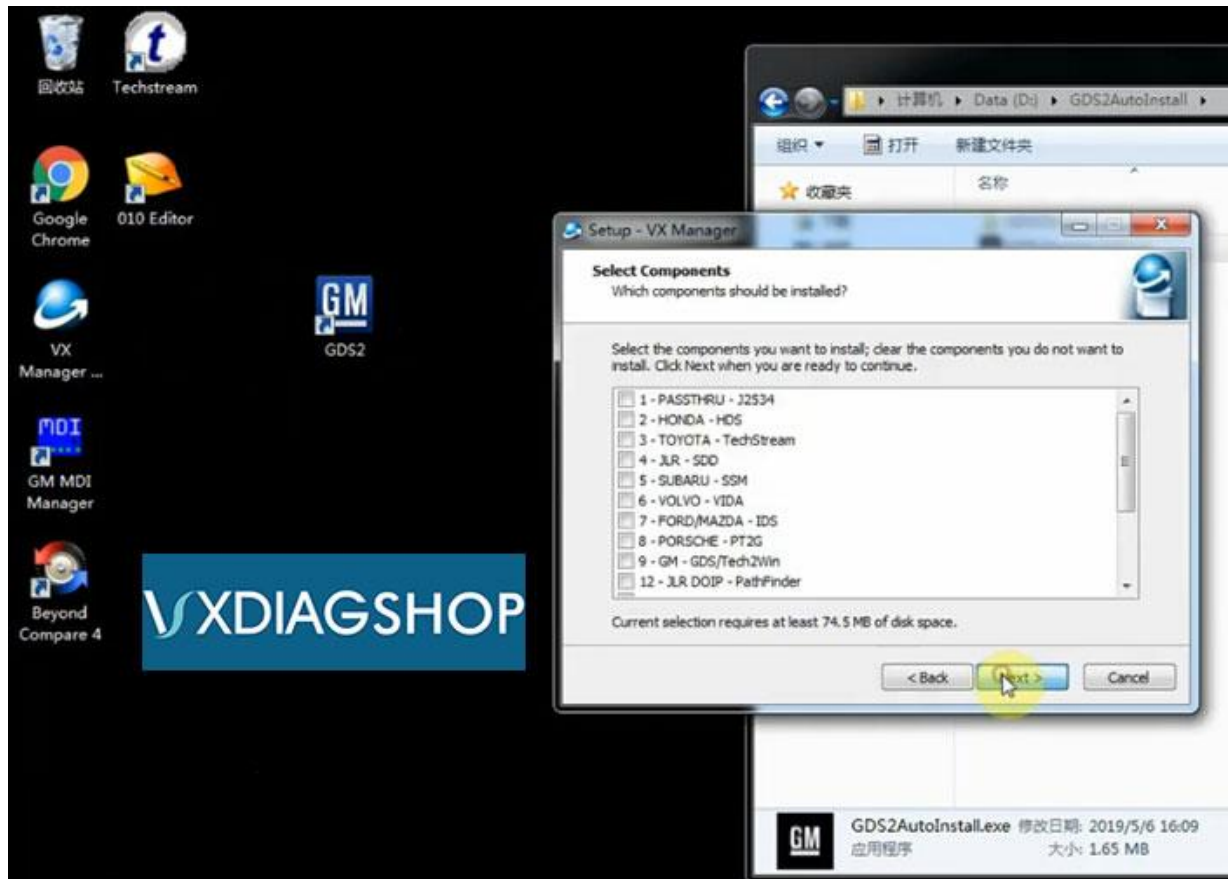
1. Download Software:



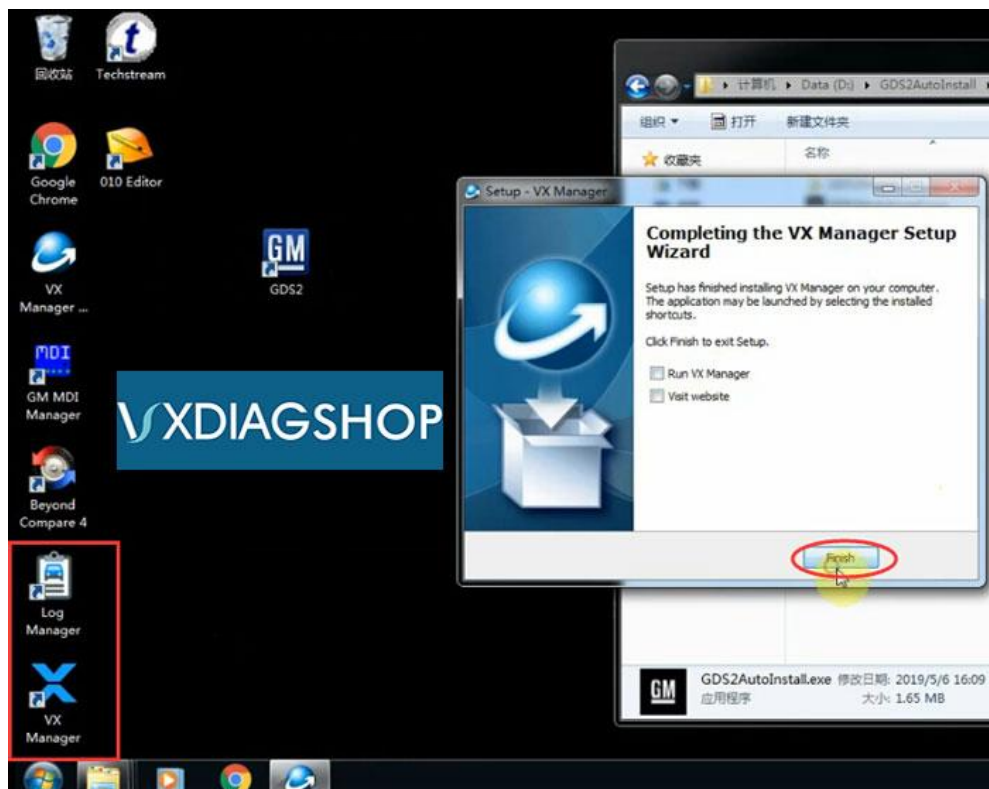


2. Run and install Gds2AutoInstall.exe





3. Install VXManager



4. Finish install VXManager

Not to start right now

Connect VCX scanner with laptop

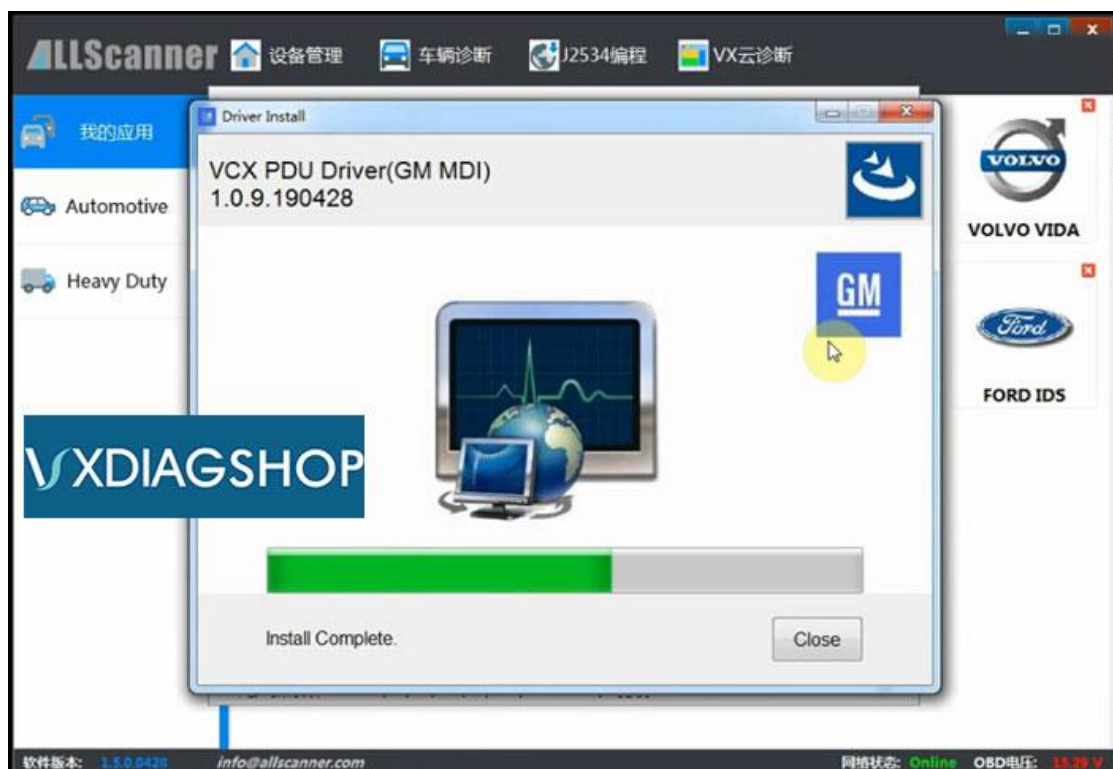


5. Open VX Manager on desktop .Device was well connected



6.Go to Diagnostic tab, install GDS2/T2W Driver

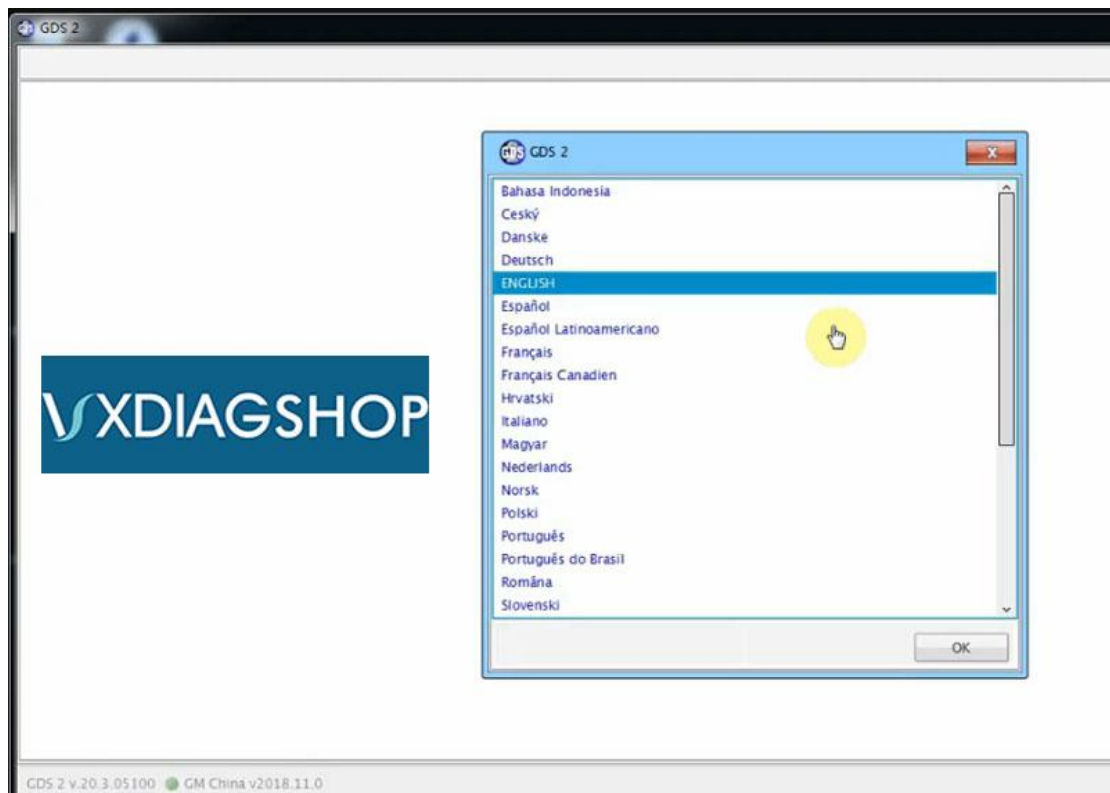
Press Install



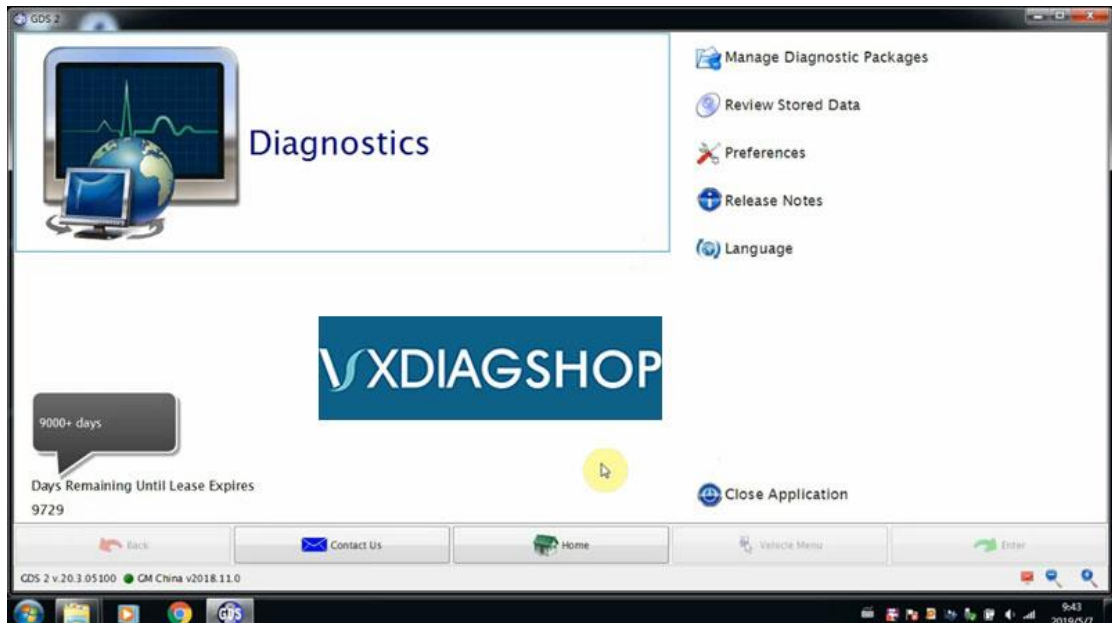
7 . Install GDS2/T2W driver success



8. Run GM GDS2 software on desktop



10. Select software language



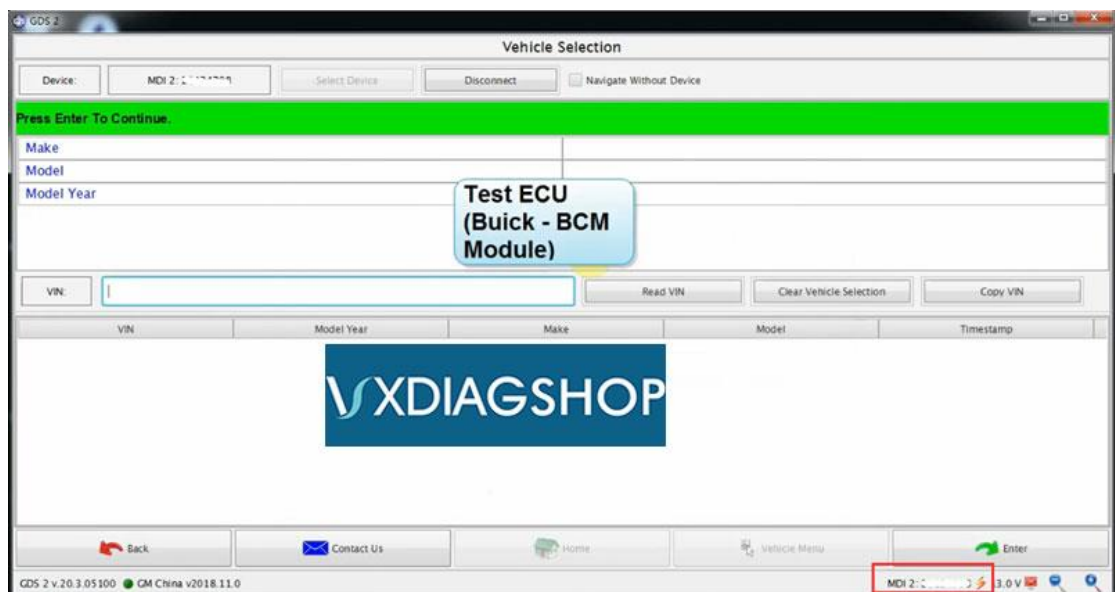
11. Click on Diagnostics





12. Choose device as MDI2

Device is connected and detected



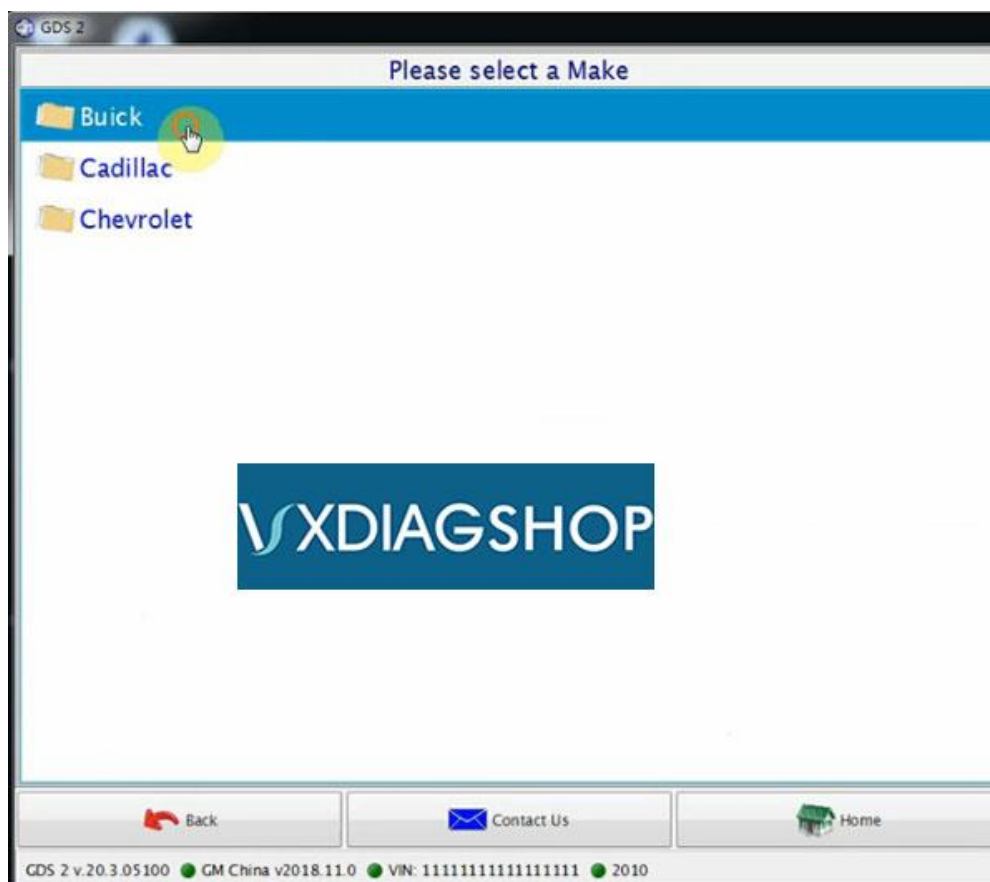
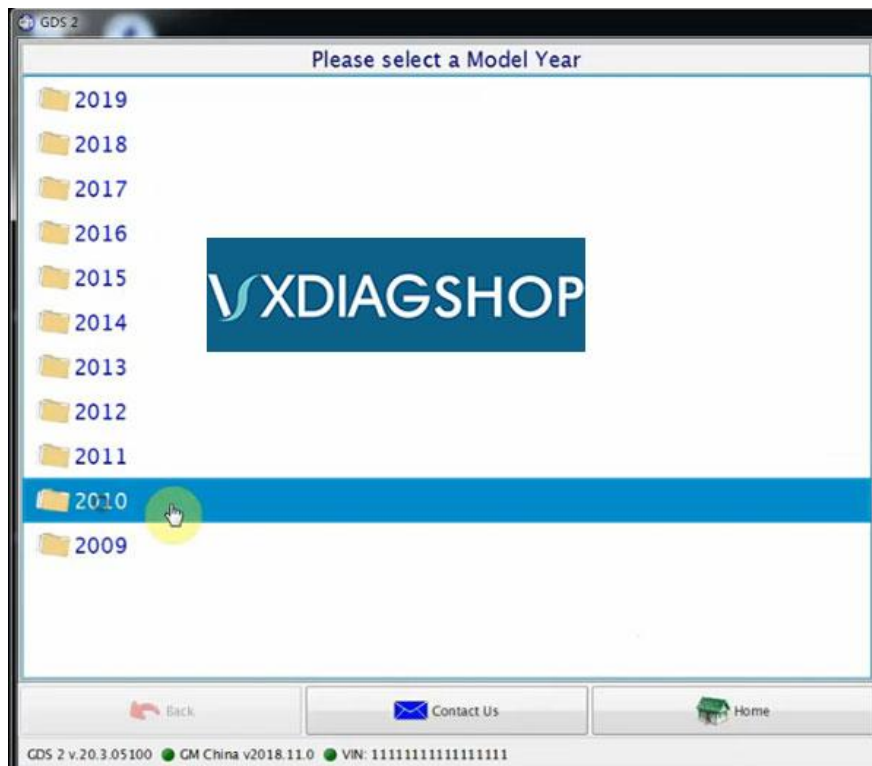
13. Test Buick Excelle 2010 BCM module

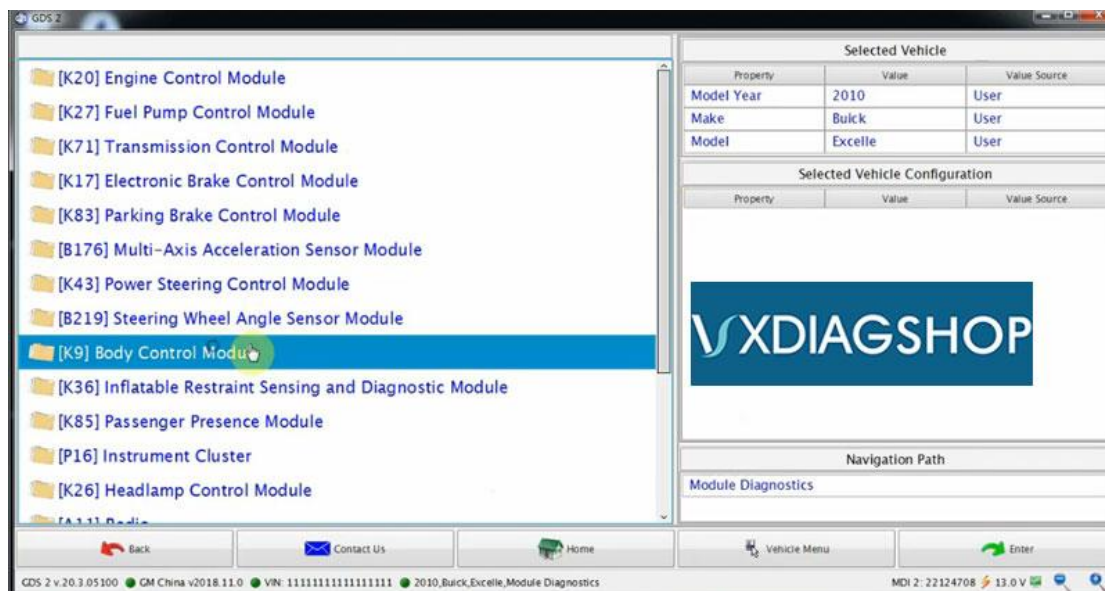
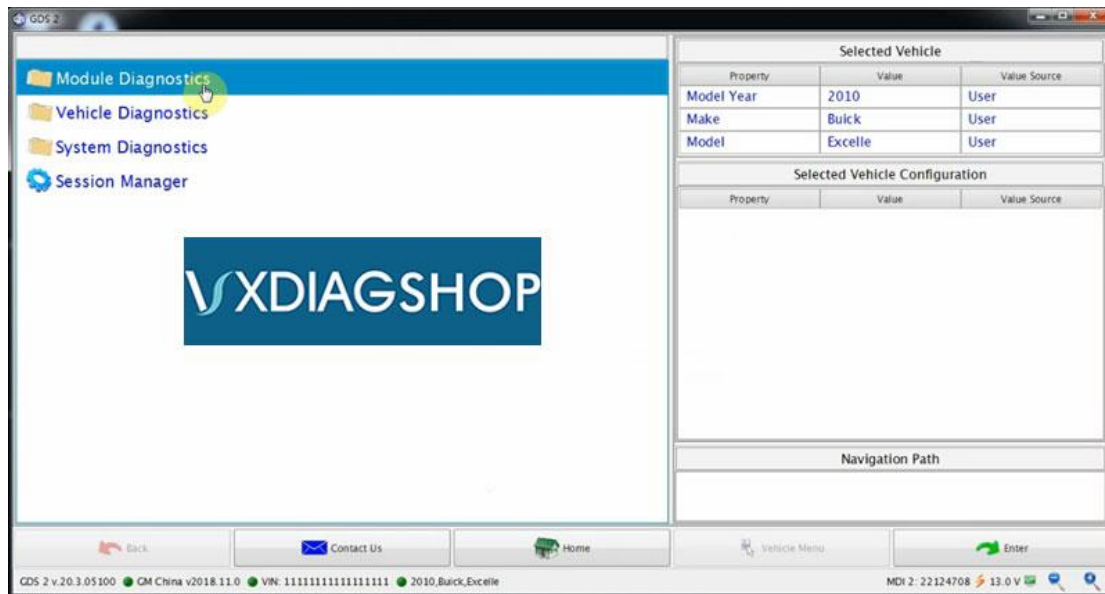
Select 2010->Buick->Excelle->Module Diagnostics->K9 Body Control

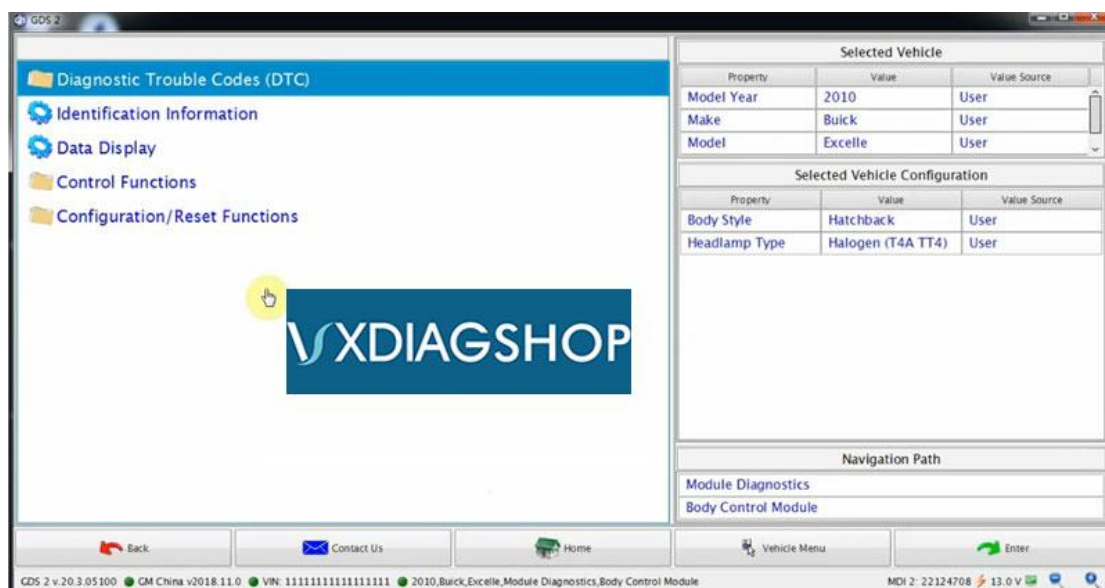
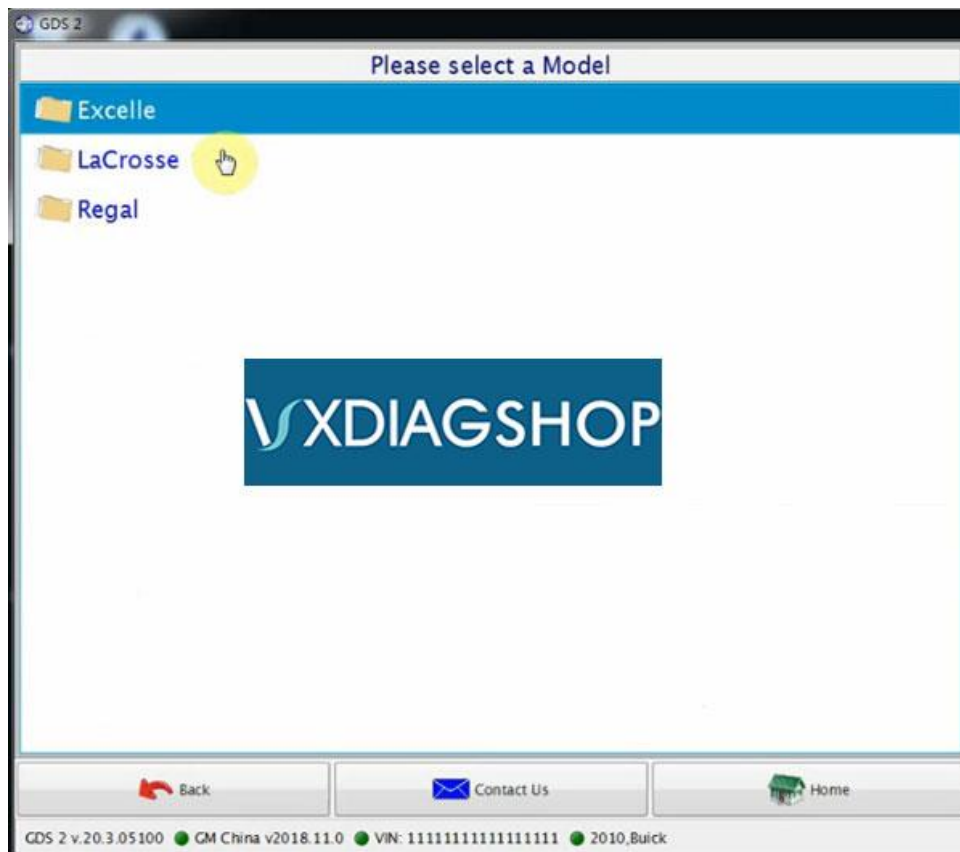
Module->headlamp type: Halogen (T4A TT4)->Body style

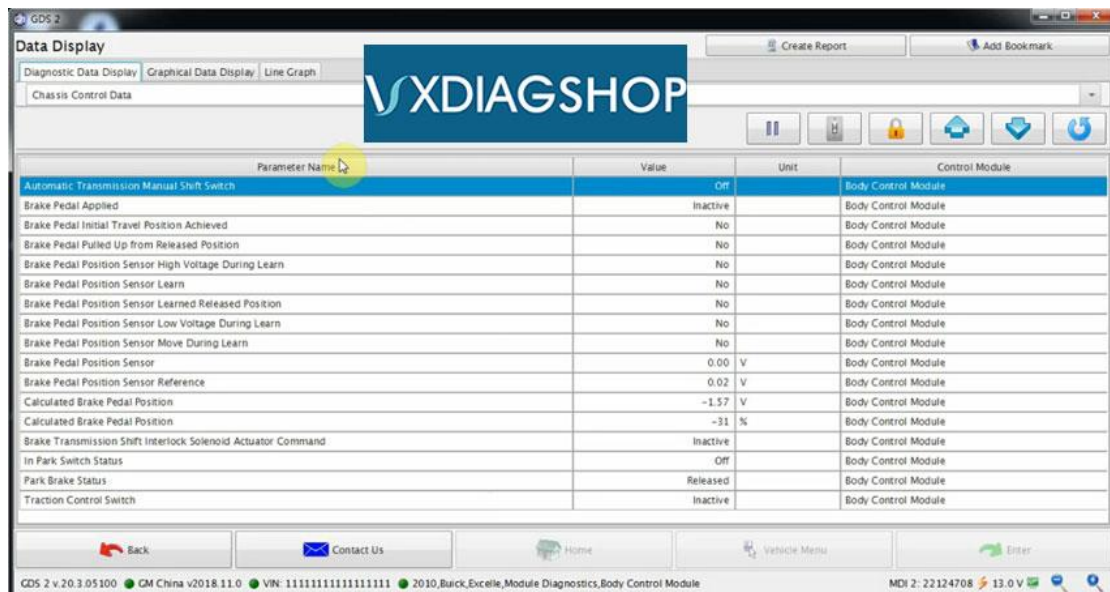
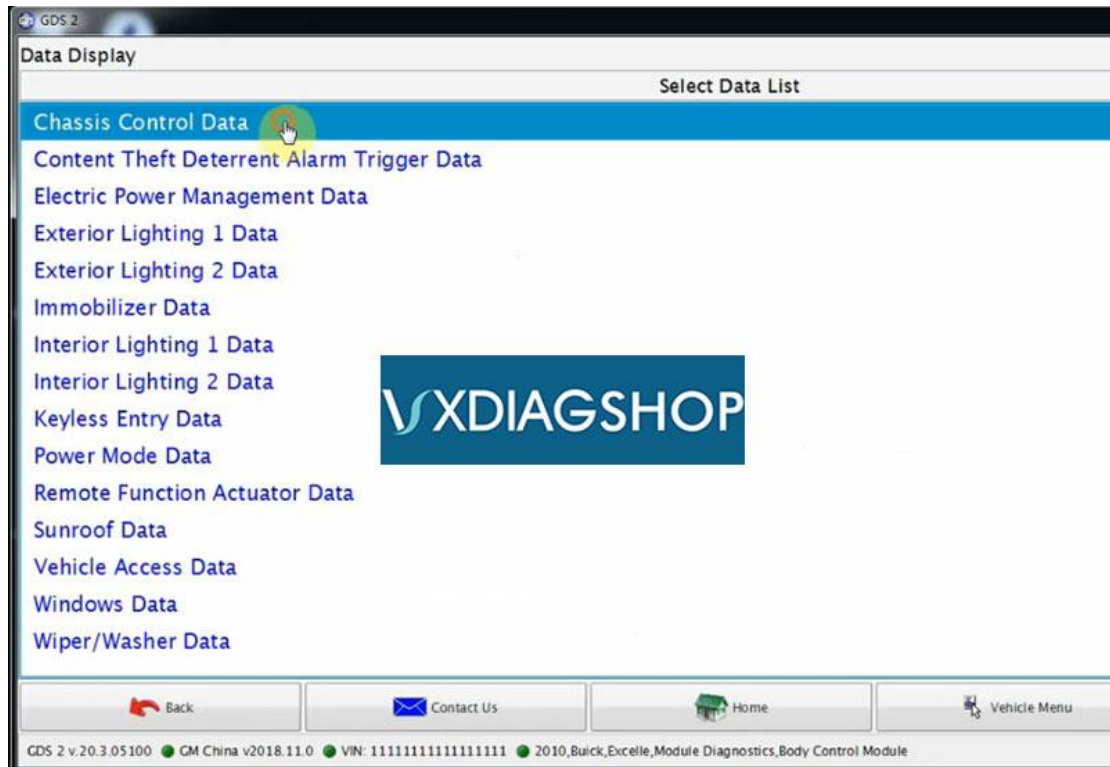
Hatchback->Data Display->select data from list

Check DTC and erase fault codes









New GDS2 software feedback:

1) The VM does not expire because it is frozen in time. I used these files to update a VM with no issues.

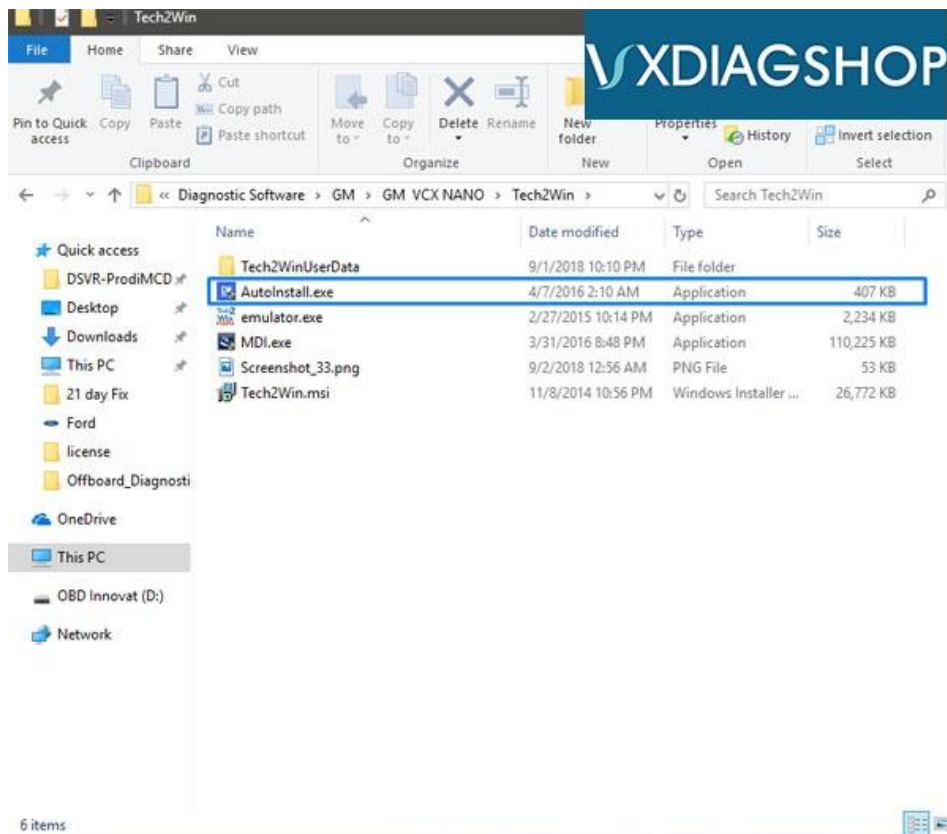
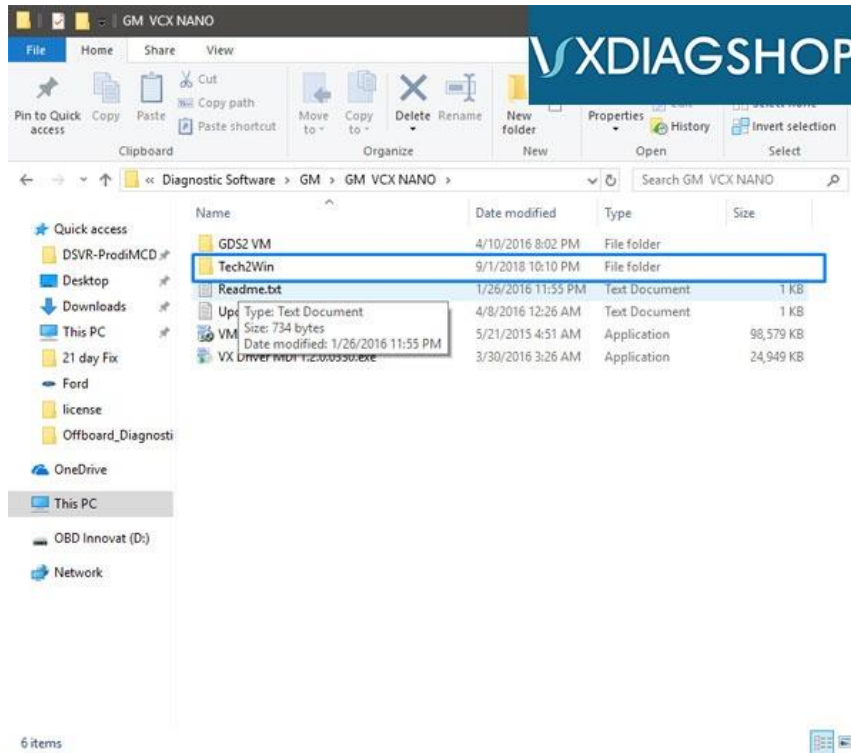
2) That file is emulating activation only if you are using a VCX tool
Otherwise your GDS2 will not be activate it.

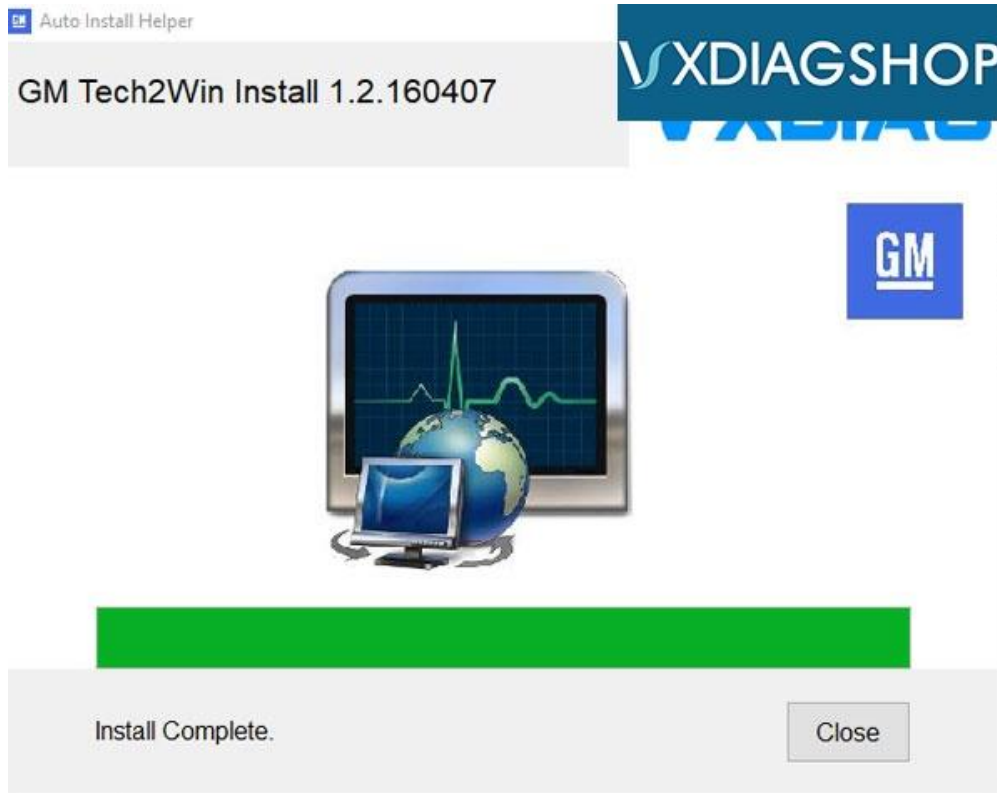
As you can see you have to have the VCX tool connected before start the emulator

But if you have an already updated VMware don't need to use that GDS2.exe.

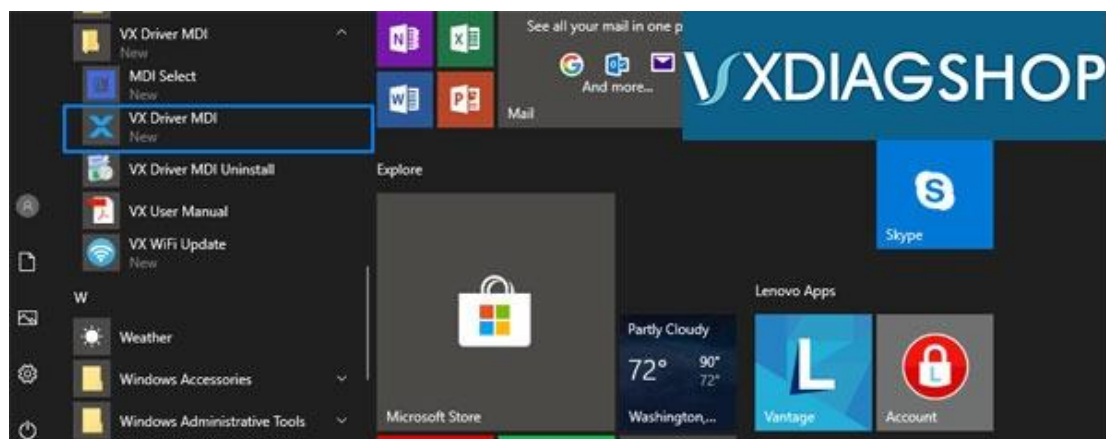
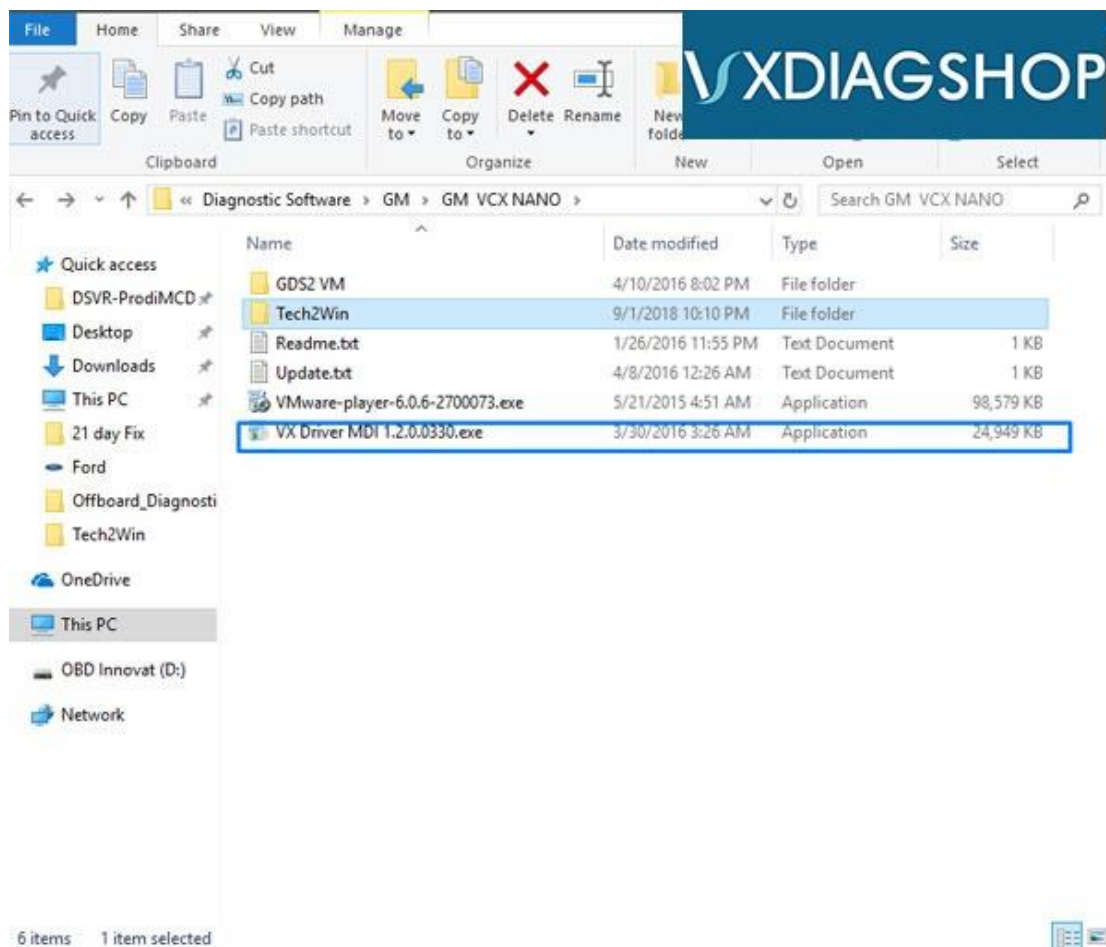
B: How to install VXDIAG GM Tech2WIN on Windows 10 Step by Step ?

1. Open the downloaded software folder. Then open the [Tech2Win] folder and open the [AutoInstall.exe] to install the software.

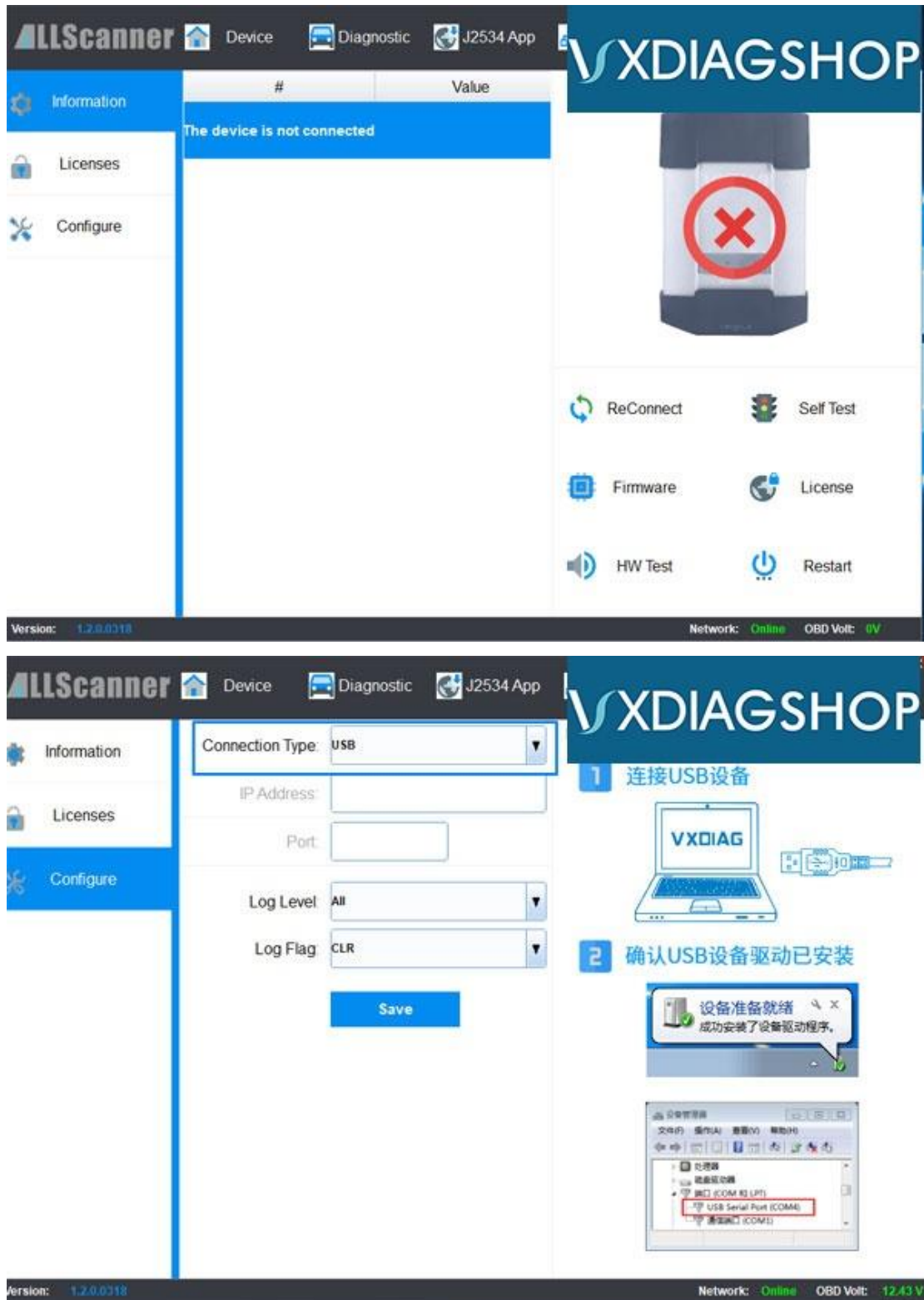




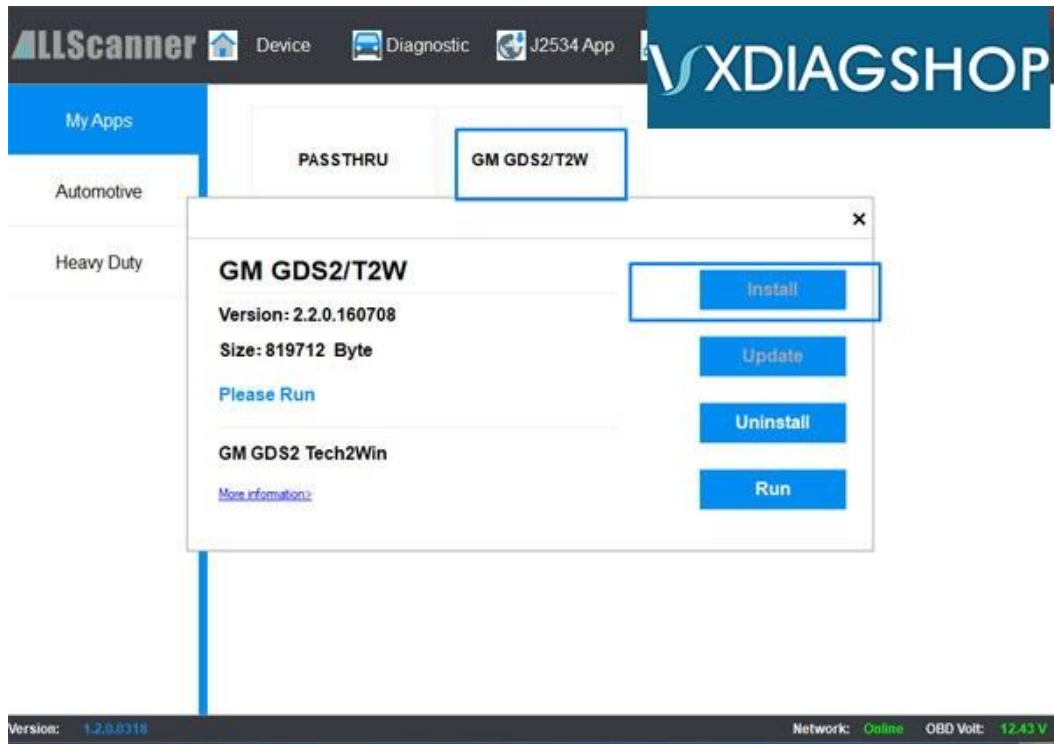
2. Install the [VX Driver MDI 1.2.0.0330.exe]. After the installation is complete, go to the Windows Start menu and find the [VX Driver MDI] folder and application and open it.



3. The VX Driver MDI software allows you to manage the interfaces currently connected to the PC. This is where you can verify if your hardware is connected, working properly, set which type of connection type you want [USB, WiFi, Bluetooth, etc] and more.



4. Go to the [Diagnostic] tab on the top and go to [My Apps] then [GM GDS2/T2W]. Then click on [Install].



5. Go to the Desktop and start the Tech2Win software from the desktop shortcut icon.



6. Right when the software starts, the Tech2Win-Configurator will pop up and ask you to choose which configuration you'd like. This would be based on your region or type of vehicle you're diagnosing. In our example, we choose [North America]. Based on your region, there will be different models available from the vehicle selection menu.

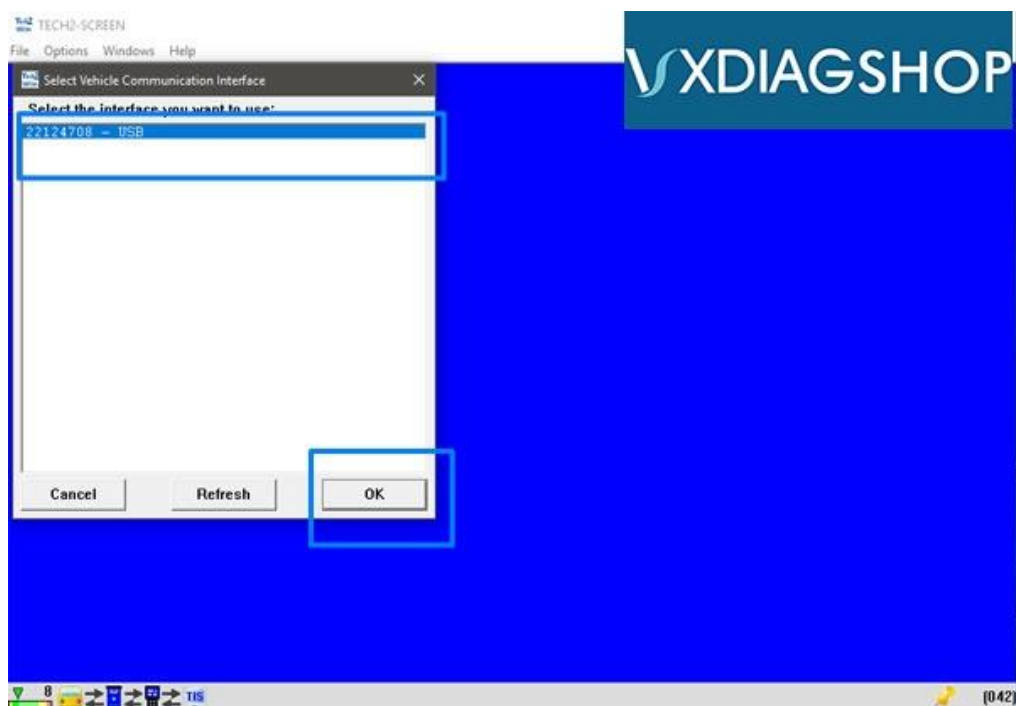
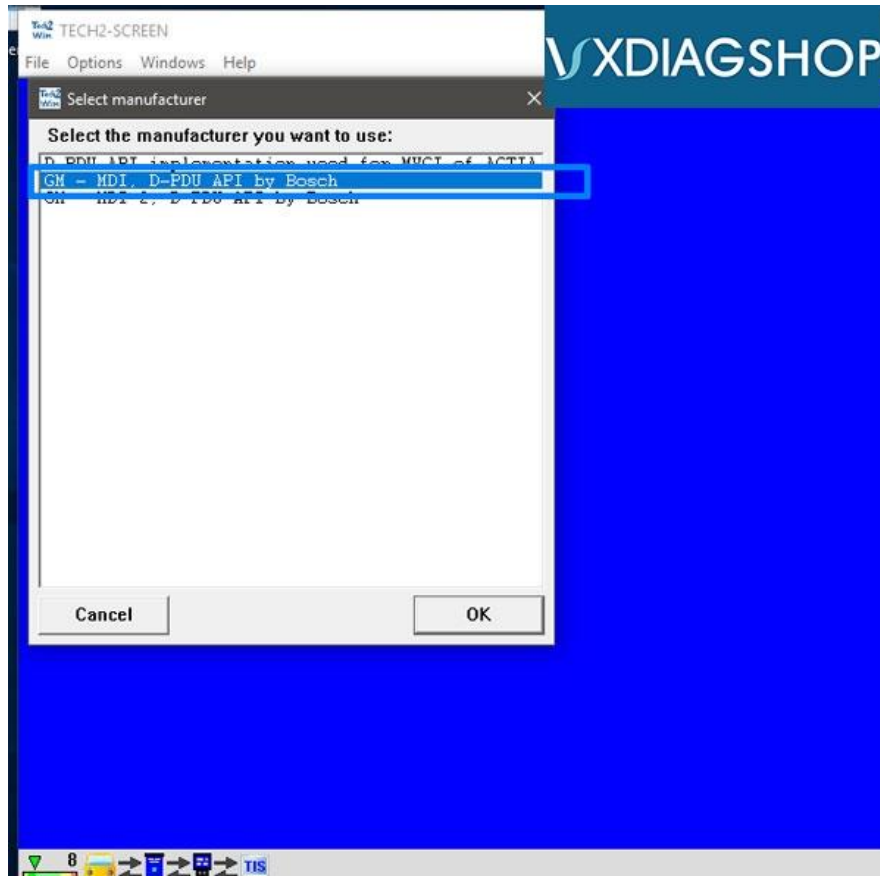
A box will pop up asking you to select the manufacturer or interface you'd like to use. The interfaces available will vary based on other types of diagnostic software you may have installed.

Select [GM – MDI, D-PDU API ny Bosch]

Then Select the interface [22124708 – USB] and click [OK]

The software will start to load and then show you the main menu. Press [Enter] to continue.

setup-vxdiag-gm-tech2win-10



7. Now the main VXDIAG GM Tech2Win menu will load. Press [Enter] to continue to main menu.

The next set of screenshots will show us going through the Diagnostic menu, selecting the

- ✓ Model year
- ✓ Vehicle Type
- ✓ Powertrain, Body, Chassis
- ✓ Engine Type
- ✓ Transmission
- ✓ Function you would like to perform

Some of the functions available include:

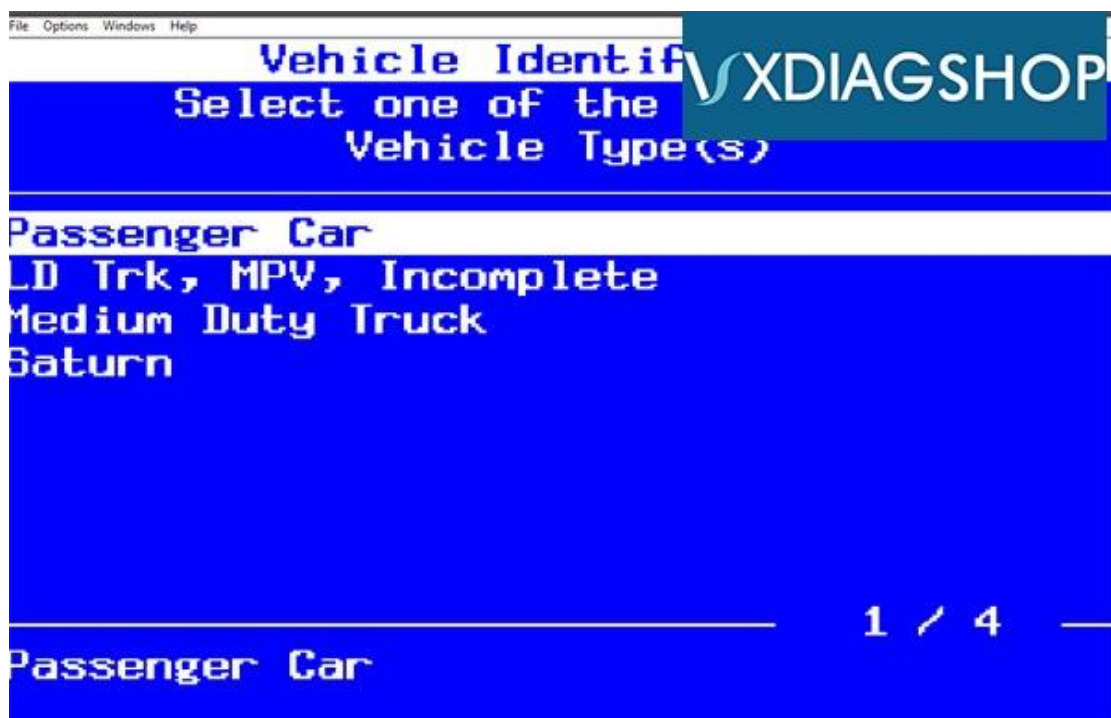
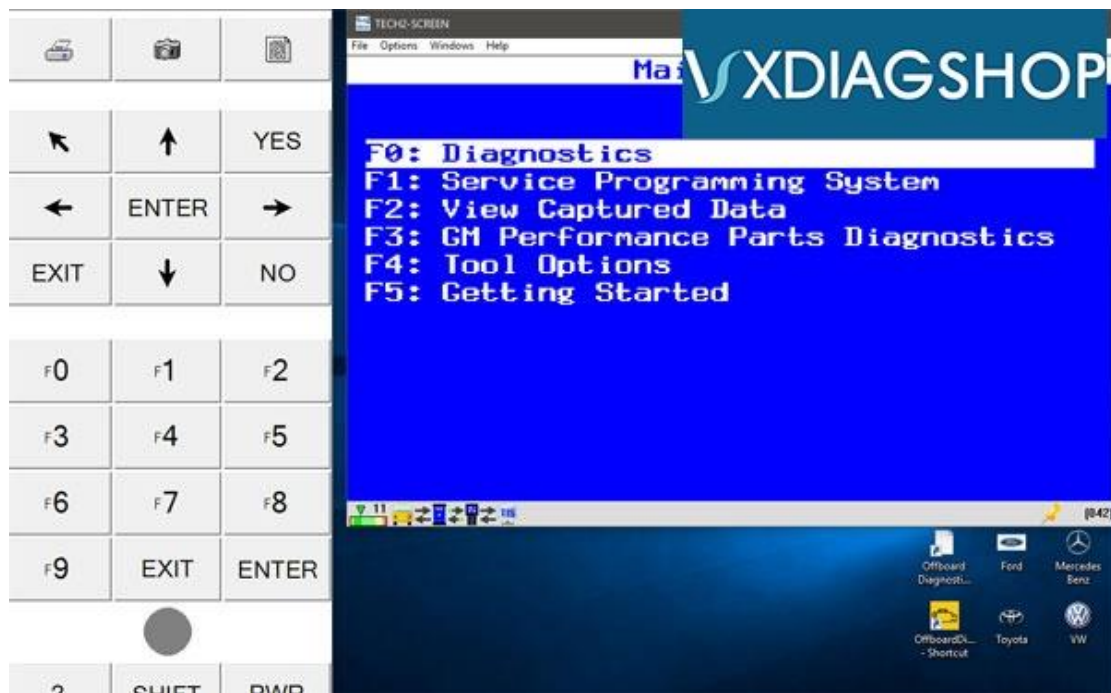
Diagnostic Trouble Codes [DTC]: Read and Clearing Diagnostic Trouble Codes

Data Display: Read real-time engine data, EVAP data, fuel trim data, misfire data, etc

Special Functions:

- ✓ Engine Output Controls
- ✓ Fuel System
- ✓ IAC System
- ✓ Crankshaft Position Variation Learn
- ✓ Misfire Graphic
- ✓ Service bay tests





F0: Powertrain

F1: Body

F2: Chassis

F3: Diagnostic Circuit Check