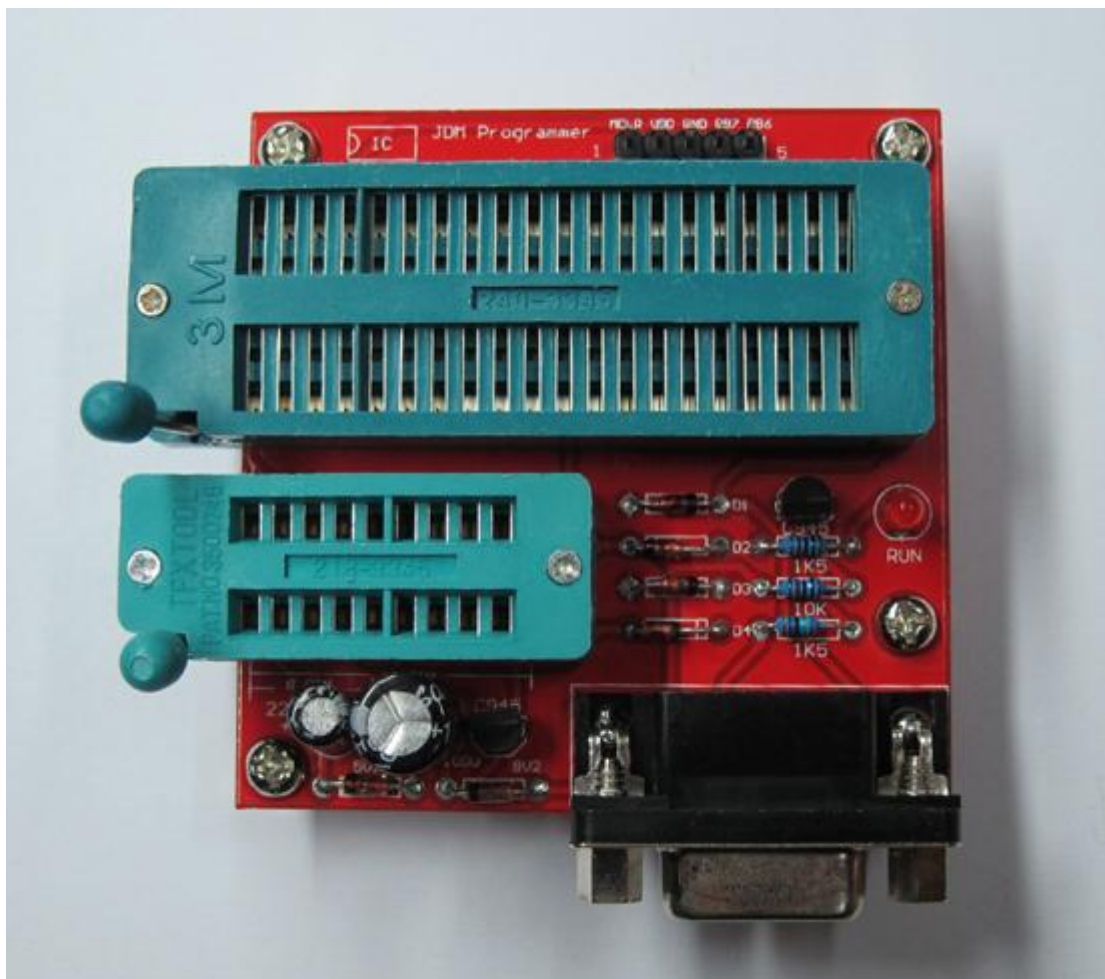


JDM PIC Microcontroller programmer (supporting 24CXXX read and write EEPROM chip)

"Pictures"



"List of product shipments"

Host 1 + serial-line 1

Software downloaded from the website

"Product features"

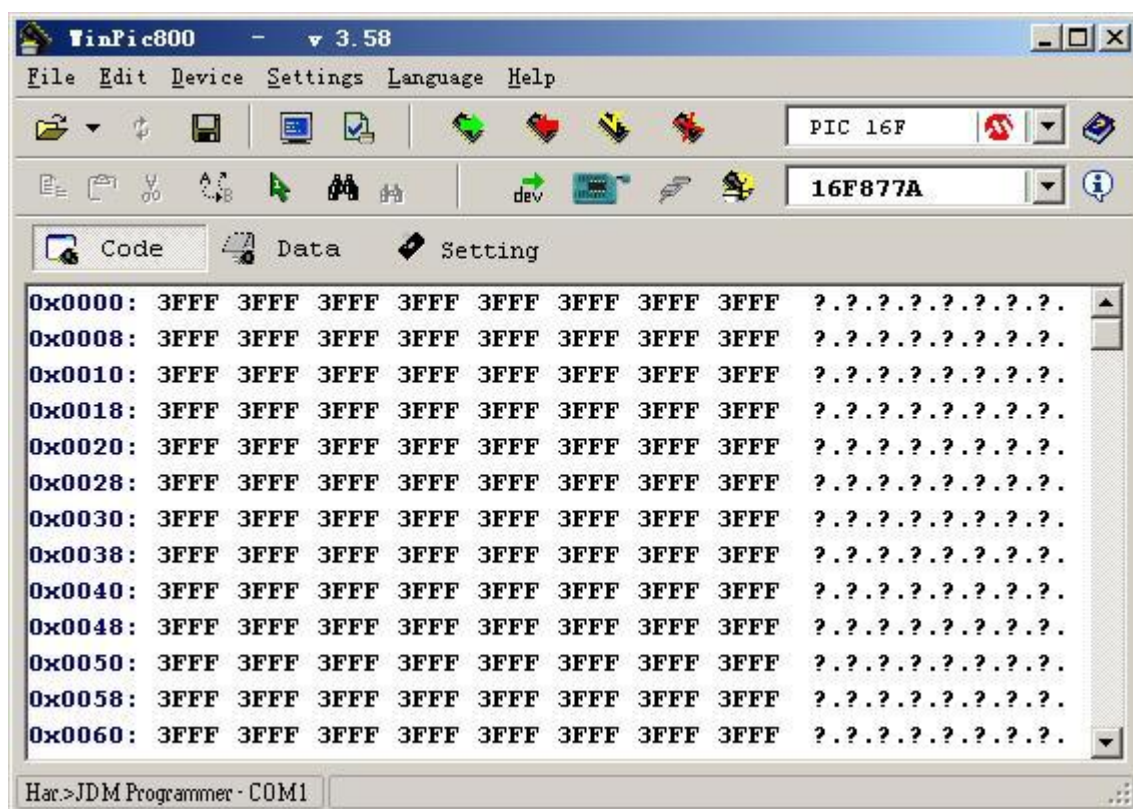
JDM PIC Microcontroller programmer supports XP/2000 system of use, ease of use, supported models more reliable performance! This product does not tackle similar products programming 24CXX EEPROM memory problem. additional ICSP download interface, can be downloaded using ICSP interface to the target Board programming. with features such as LED indicates. product support WinPic800, IC-PROG, PonyProg2000 software environments. If you are using WINPIC800 software works best after practice, reliability and stability. (Note this product does not use the USB transfer serial lines, you need to support COM1 or COM2)

"Support the PIC list"

16C61	16C62	16C62A/B	16C63	16C63A	16C64	16C64A
16C65	16C65A/B	16C66	16C67	16C620/A	16C621/A	16C622/A
16C623	16C624	16C625	16C71	16C72	16C72A	16C73
16C73A/B	16C74	16C74A/B	16C76	16C77	16C710	16C711
16C712	16C716	16C745	16C765	16C773	16C774	16C923
16C924	16C925	16C926				
10F200	10F202	10F204	10F206			
12F629	12F635	12F675	12F683	12F508New	12F509New	12F510New
16F627	16F627A	16F628	16F628A	16F630	16F636	16F639
16F648A	16F676	16F684	16F688	16F73	16F74	16F76

16F77	16F716	16F737	16F747	16F767	16F777	16F83
16F84	16F84A	16F87	16F88	16F818	16F819	16F870
16F871	16F872	16F873	16F873A	16F874	16F874A	16F876
16F876A	16F877	16F877A				
18F242-2439		18F248	18F252-2539		18F442-4439	
18F258	18F448	18F452-4539		18F458	18F1220	18F1320
18F2220	18F2320	18F4220	18F4320	18F2331	18F2431	18F4331
18F4431	18F6520	18F6620	18F6720	18F8520	18F8620	18F8720
18F2410	18F2420	18F2455	18F2480	18F2510	18F2515	18F2520
18F2525	18F2550	18F2580	18F2585	18F2610	18F2620	18F2680
18F4410	18F4420	18F4455	18F4480	18F4510	18F4515	18F4520
18F4525	18F4580	18F4585	18F4610	18F4620	18F4680	
24C01	24C02	24C04	24C08	24C16	24C32	24C64
24C128	24C256	24C512				

"Software interface"

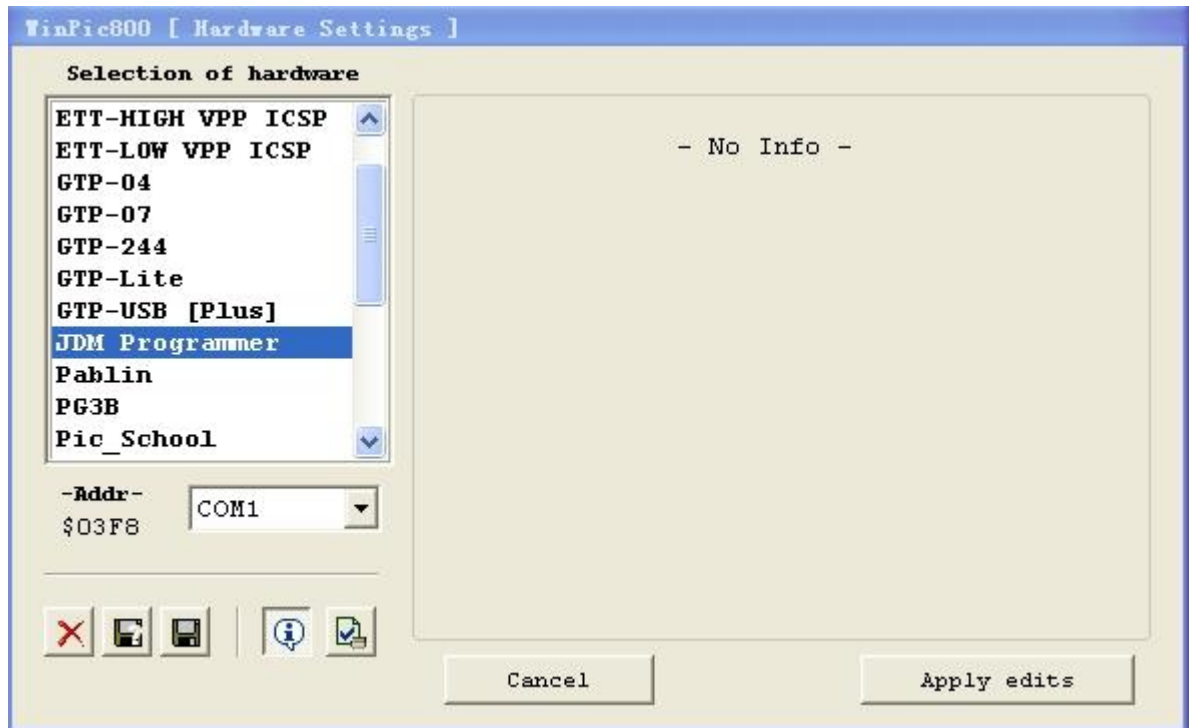


"Chip placement"

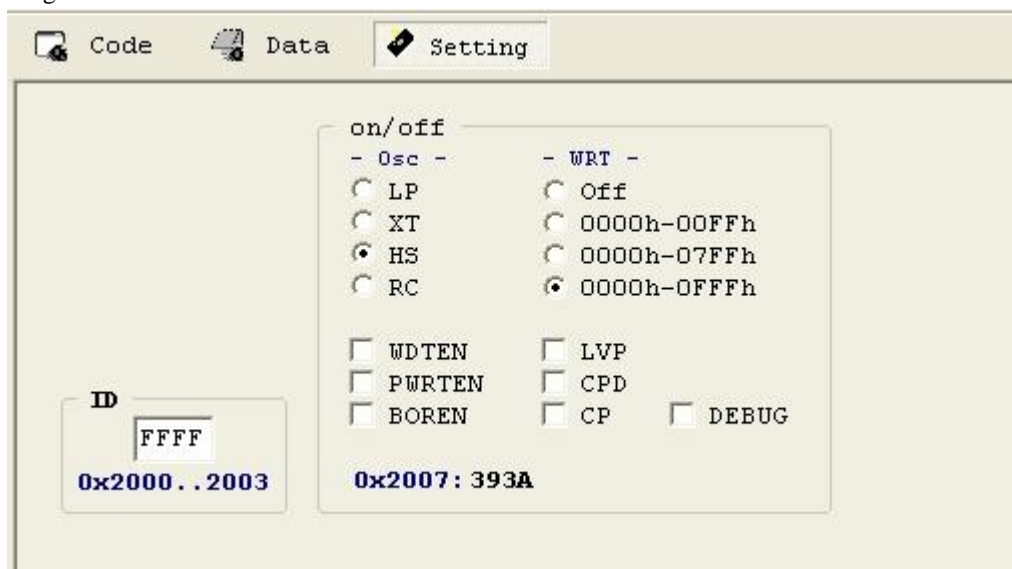
- 8 feet, 18 foot chip in the ZIF18 left.
- 28 feet, 40 foot chip in the ZIF40 left.
- Programming 24CXX, chip in top right on the ZIF40, semi-direction on the handle.
- 1th-chip 1th feet, feet in programming block.

"Installation procedure"

1. Download and install the software for programming WINPIC800.
- 2, the software "Hardware Settings" select " JDM Programmer".



3, select **"Settings"** settings to configure.



-WRT-choose a PIC of them Burning ROM write, generally opt for 0000h-0fffh.



Read /Program/Verity/Erase
Are: read/write/verify/erasure

Note using a guarantee when plug the serial cable status.

"Download product documentation"

[WINPIC800 programmer software download](#) (English OK, recommended)

[WINPIC800 programmer software download](#)